



Motor Protectors from Texas Instruments

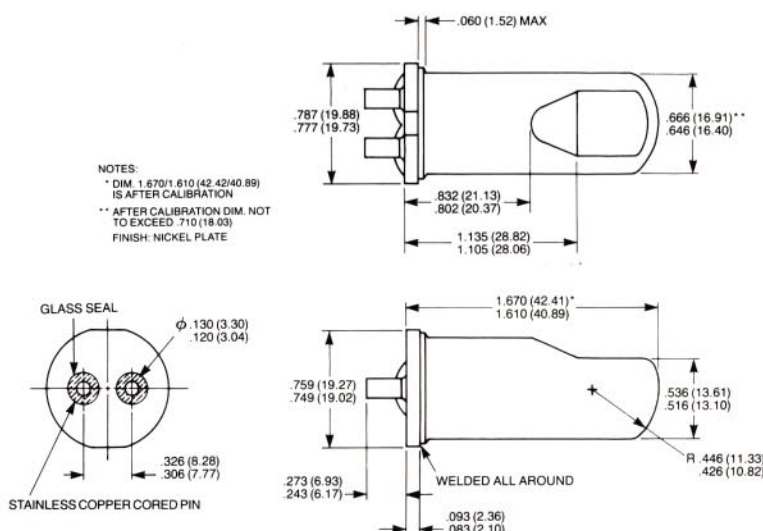
16 HM Series

Hermetically Sealed Single-Phase On Winding Protection

Features

- Direct line break
- Automatic reset
- Compact and rugged construction
- Provides start winding protection
- Meets scroll and high side compressor requirements
- Low-price alternative for 5 HM and 6 HM hermetic protectors
- Application range – 2HP to 6HP*
- Tamperproof protection
- Hermetically sealed

Basic 16 HM Envelope



Product Description

16 HM hermetic overload protectors are a new generation product designed to meet the demands of tomorrow's compressors. The 16 HM family of motor protectors can be applied to air conditioning compressors ranging from 2 to 6HP*.

The 16 HM utilizes two internal heaters. One of them is sensitive to start winding current and the other is sensitive to main winding current. The device can protect against start winding overheating and against conditions which generate high main winding currents. Its compact and rugged design make it resistant to mechanical shock and suitable for installation directly on motor windings.

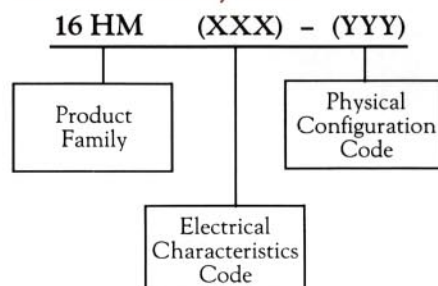
Line Break Operation

Klixon 16 HM motor protectors are line break automatic reset controls which are wired in series with the motor windings. These protectors are designed to track winding temperatures and to respond to changes in line current.

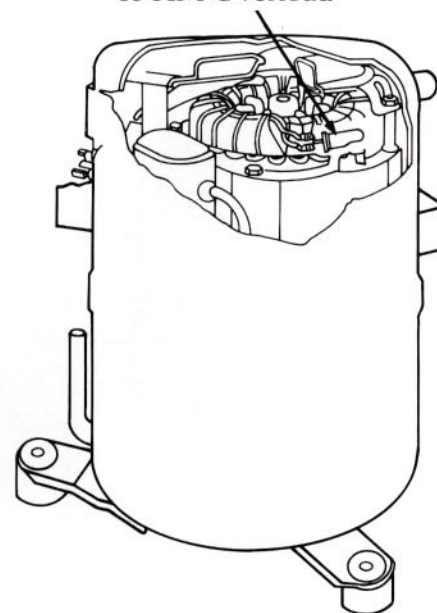
When properly applied, the 16 HM can provide protection against motor overheating under the following conditions:

- Running overload
- High/low voltage locked rotor
- High voltage light load
- Loss of refrigerant charge
- Welded start relay
- Shorted capacitor
- Blocked condenser fan

16 HM Code System

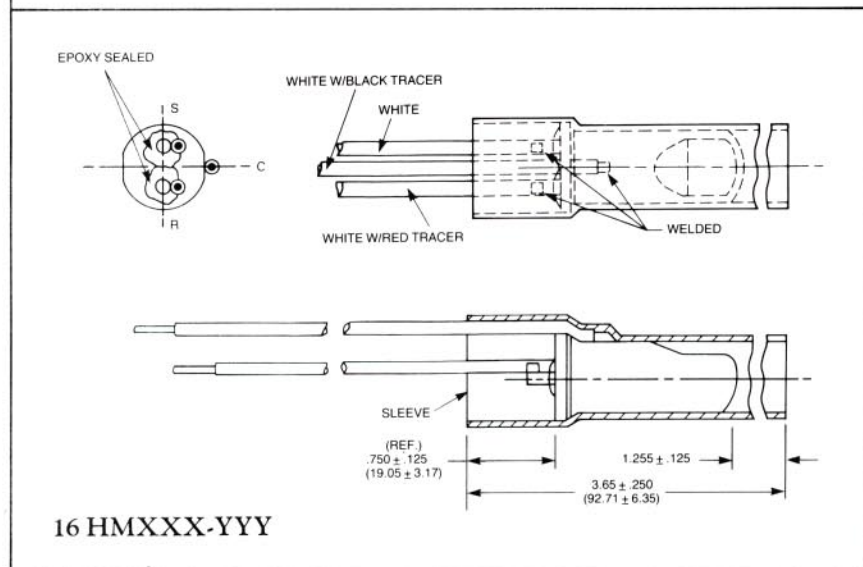
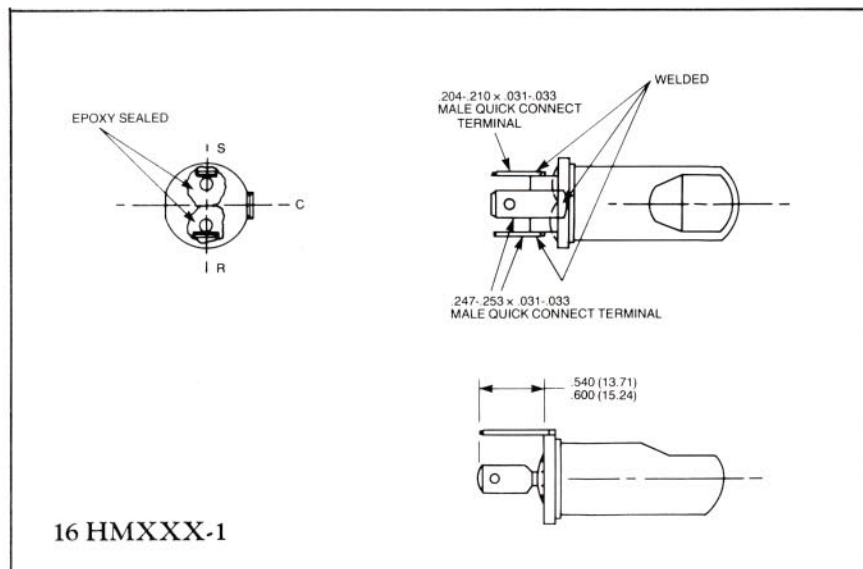


16 HM Overload

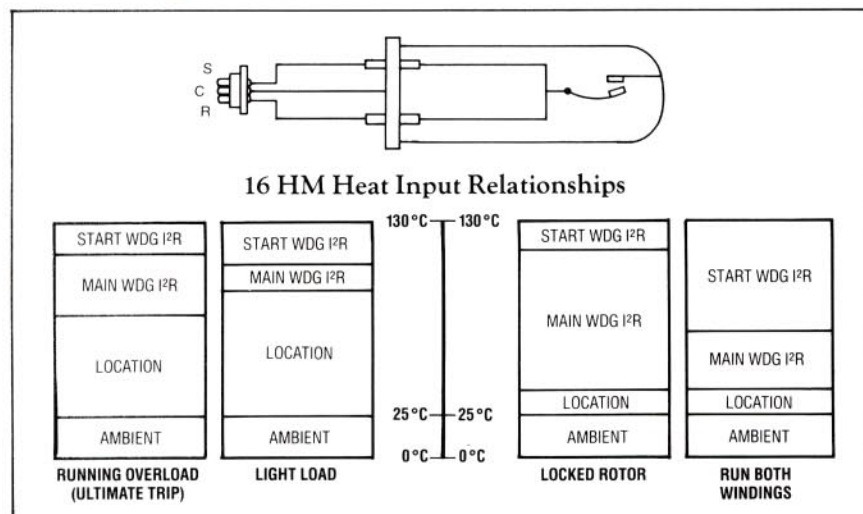


Hermetic Compressor

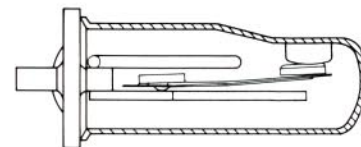
16 HM Termination Styles



Circuit Diagram



Internal Geometry



Protector Rating

Series	Line Voltage	Lock Rotor Current
16 HM 1XX	230V	*165 Amps

*To be used as a guide for selection only, consult factory for specific life test data.

Specifications

Open temperature.....95°C-155°C
in 5°C increments.
Tolerance..... ±5°C open
..... ±9°C close
Several termination options
U/L Recognized-File E15962
CSA Certified-File LR11372

For further information write or call:
Texas Instruments Incorporated
Motor Controls Marketing
Attleboro, MA 02703
Telephone: (508) 699-3800

Texas Instruments provides customer assistance in varied technical areas. Since TI does not possess full access to data concerning all of the uses and applications of customers' products, responsibility is assumed by TI neither for customer product design nor for any infringements of patents or rights of others which may result from TI assistance.

